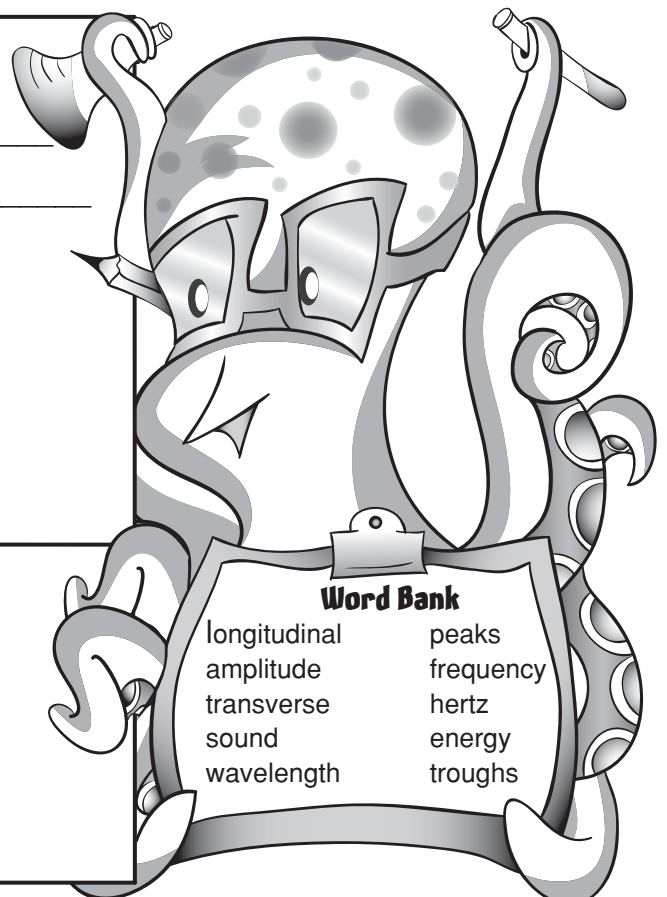
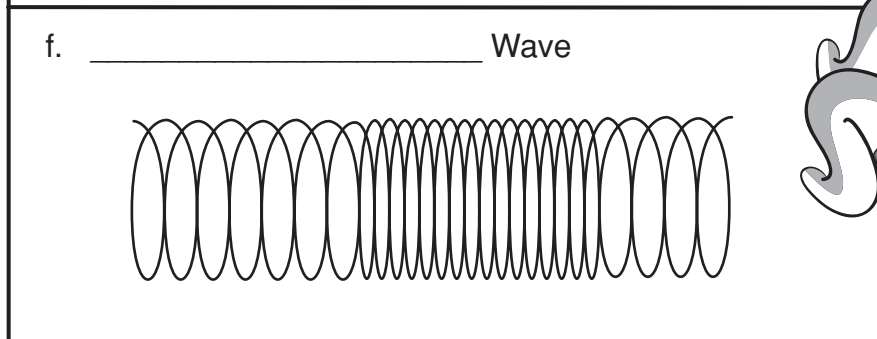
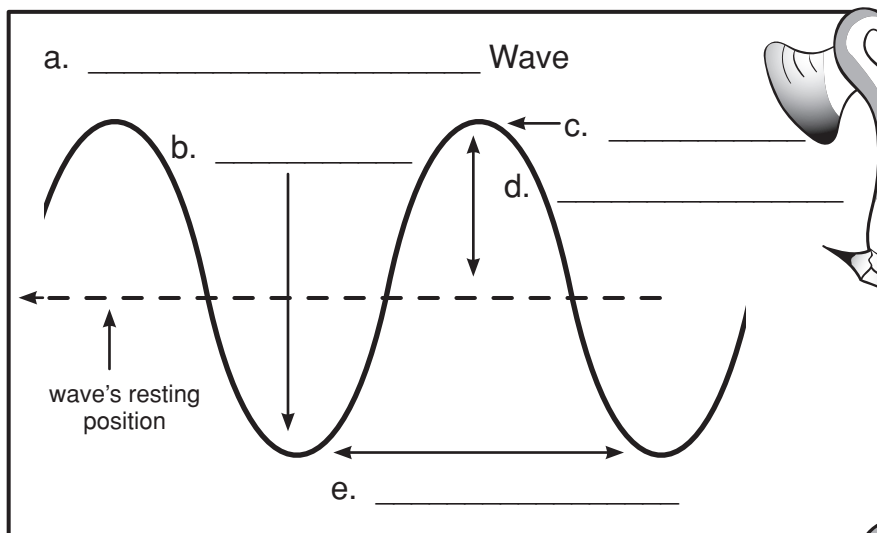


# Making Waves

Complete each sentence below with a word from the word bank. Then label each diagram.

1. E \_\_\_\_\_ travels in waves.
2. Transverse waves move up and down in patterns that have high points called \_\_\_\_ a \_\_\_\_.
3. The low points of a transverse wave are called \_\_ r \_\_ u \_\_ h \_\_.
4. The distance between any two troughs or peaks is called the \_\_\_\_ v \_\_\_\_ n \_\_\_\_.
5. The height of a peak or trough is called the a \_\_\_\_\_ d \_\_\_\_.
6. \_\_\_\_ e \_\_\_\_ e \_\_\_\_ is the number of complete waves that pass by in one second.
7. Frequency is measured in \_\_\_\_ t \_\_\_\_ (which is written Hz).
8. L \_\_\_\_ g \_\_\_\_ d \_\_\_\_ waves move by pushing forward and pulling back.
9. \_\_\_\_ o \_\_\_\_ waves are examples of longitudinal waves.
10. Waves on the surface of water are examples of t \_\_\_\_\_ waves.



**ANSWER KEY**

- a. Transverse
  - b. trough
  - c. peak
  - d. amplitude
  - e. wavelength
  - f. Longitudinal or Sound
- 
- 1. Energy
  - 2. peaks
  - 3. troughs
  - 4. wavelength
  - 5. amplitude
  - 6. Frequency
  - 7. hertz
  - 8. Longitudinal
  - 9. Sound
  - 10. transverse